



# Day 1

Practice reading this week's Sight Words.

before its then from  
after cut many shall

**\*\* Spelling Test on Friday\*\***

Practice reading this week's Sentences.

1. I walk my dog before school.
2. The car had its door open.
3. Ride your bike, and then come inside.
4. Is that book from the library?
5. After music, we will do our math.
6. Draw a circle and then cut it out.
7. How many children are in your class?
8. What shall we do after school?

**\*\* Read or listen to reading for 20 minutes\*\***

Read a book. Write 1. Title, 2. Author, 3. Illustrator, 4. Main Character

1 \_\_\_\_\_

2 \_\_\_\_\_

3 \_\_\_\_\_

4 \_\_\_\_\_

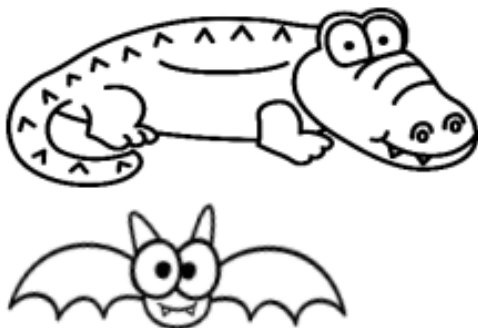
Solve the addition problems

1.  $2+5=$  \_\_\_\_\_
2.  $4+4=$  \_\_\_\_\_
3.  $7+6=$  \_\_\_\_\_
4.  $1+10=$  \_\_\_\_\_

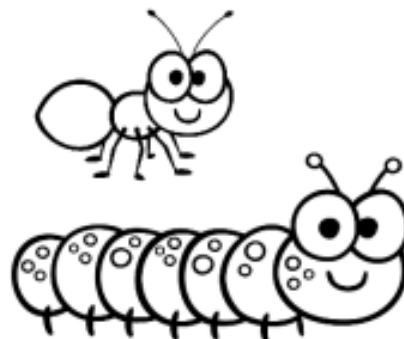
Solve the subtraction problems

1.  $9-7=$  \_\_\_\_\_
2.  $6-4=$  \_\_\_\_\_
3.  $7-3=$  \_\_\_\_\_
4.  $10-5=$  \_\_\_\_\_

Color the animal that is longer.



Color the animal that is shorter.



# Day 2

h q z b r c u k p i  
x t i e d u a b w t  
a j o f h t s v f s  
f f u o w u k f o n  
t a t r b p m a n y  
e o r e f a l l n y  
r k c m z e d j d g  
f r o m s h a l l t  
g u m o j x l k a b  
w y e s n t h e n q

Read & find  
the spelling  
words:

before  
its  
then  
from  
after  
cut  
many  
shall

**\*\* Spelling Test on Friday\*\***

**Practice reading this week's Sentences.**

1. I walk my dog before school.
2. The car had its door open.
3. Ride your bike, and then come inside.
4. Is that book from the library?
5. After music, we will do our math.
6. Draw a circle and then cut it out.
7. How many children are in your class?
8. What shall we do after school?

**\*\* Read or listen to reading for 20 minutes\*\***

**What did you do over Spring Break? Write a narrative.**

-----

-----

-----

-----

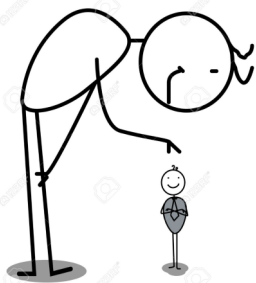
-----

-----

-----

**Mrs. White has 15 popsicles. She gives 10 popsicles away. How many popsicles does she have left?**

**Circle the objects that begin with the sm blend.**



# Day 3

Write this week's spelling words.  
before its then from after cut many shall

_____	_____
-----	-----
=====	=====
-----	-----
=====	=====
-----	-----
=====	=====
-----	-----

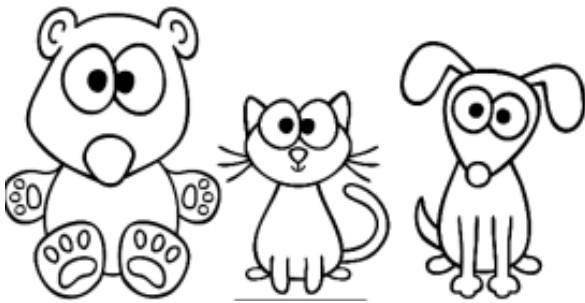
Practice reading this week's Sentences.

1. I walk my dog before school.
2. The car had its door open.
3. Ride your bike, and then come inside.
4. Is that book from the library?
5. After music, we will do our math.
6. Draw a circle and then cut it out.
7. How many children are in your class?
8. What shall we do after school?

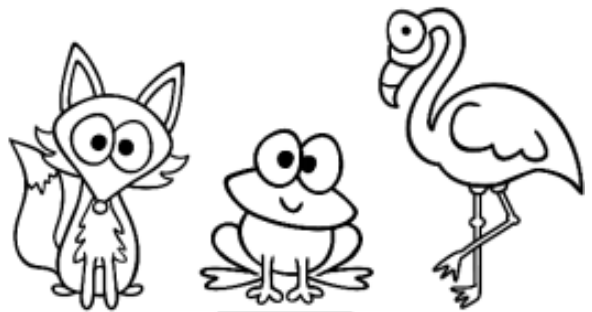
\*\* Read or listen to reading for 20 minutes\*\*

I went camping and made 10 s'mores. My friend made 4 more s'mores. How many s'mores did we have in all?

Color the animal that is tallest.



Color the animal that is shortest.



Use the letters to complete the -op word family words.

sh, p, m, ch



\_\_\_\_\_  
-----  
\_\_\_\_\_ **op**



\_\_\_\_\_  
-----  
\_\_\_\_\_ **op**



\_\_\_\_\_  
-----  
\_\_\_\_\_ **op**



\_\_\_\_\_  
-----  
\_\_\_\_\_ **op**

# Day 4

Write this week's words in ABC order.  
before its then from after cut many shall

1	5
2	6
3	7
4	8

Practice reading this week's Sentences.

1. I walk my dog before school.
2. The car had its door open.
3. Ride your bike, and then come inside.
4. Is that book from the library?
5. After music, we will do our math.
6. Draw a circle and then cut it out.
7. How many children are in your class?
8. What shall we do after school?

\*\* Read or listen to reading for 20 minutes\*\*

There are 12 slices of pizza in the box. There are 6 friends who want to share.  
How many slices of pizza does each friend get?

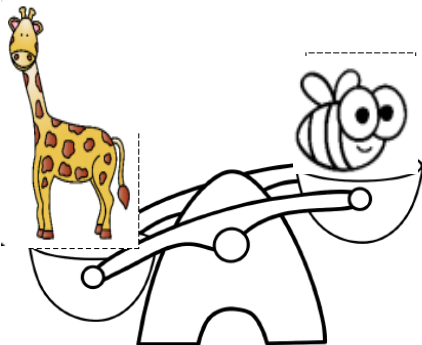
Solve the addition problems

1.  $1+6=$  \_\_\_\_\_
2.  $3+8=$  \_\_\_\_\_
3.  $11+4=$  \_\_\_\_\_
4.  $0+13=$  \_\_\_\_\_

Solve the subtraction problems

1.  $8-5=$  \_\_\_\_\_
2.  $10-6=$  \_\_\_\_\_
3.  $12-6=$  \_\_\_\_\_
4.  $14-7=$  \_\_\_\_\_

Color the animal that is **heaviest**.



Color the animal that is **lightest**.

